

# Reckless Sleepers



# A String Section

Originally created as a Gallery event the project has been adapted into larger scale performances presented together with local dancers in many different parts of Europe & Australia.

Gallery version with 5 performers, and larger-scale version with up to 12 company dancers & company producer.

Larger - scale participatory versions with local dancers require pre-presentation auditions & site visits.

Chairs & saws can be transported or sourced locally.

Created by : Leen Dewilde for Reckless Sleepers

Running time: 45 minutes

Synopsis : In A String Section 5 women carry 5 saws & over 45 minutes cut the legs off the chairs that they sit on.

Press sample : 'what a manifold and meaningful piece it proves - without doubt, one of the most gripping and visceral things I have seen this festival.'  
Matt Trueman, Whats on Stage



Links

[Press reviews](#)

[Production file](#)

[Presentation hosts](#)

# Negative Space

Created from 2014 - 2016 The theatre performance Negative Space was initially proposed as a counterpoint to Schrödinger.

Development started with building a 1:1 scale model wooden frame clad with plasterboard, after the first hammer strike into a clean white space the company continued to smash up the boards a process of destruction that led to the construction of Negative Space.

Created by : Mole Wetherell for Reckless Sleepers

Performed with 6 members of the company and lighting operator.

Suitable for Mid-Scale theatre spaces

Running time : 60 Minutes.

The simple wooden frame can be constructed in 4 days, the floor can use standard rostra size 1200 x 2400 x 600

Synopsis : From a blank architectural canvas, something fantastical emerges. It's a love story. It's a slapstick comedy. It's slasher, action, melodrama...and not a single word is spoken.

Press sample : "Negative Space is..... beautiful" James Varney Exuent



**DIGITAL THEATRE+**

Links

[Press reviews](#)

[Production file](#)

[Presentation hosts](#)

# Schrödinger

The oldest of the company repertoire of projects originally devised in 1998 / 1999 as Schrödinger's Box, in 2011 the project was renamed, remade and toured extensively throughout the UK, Belgium & Luxembourg.

Created by: Mole Wetherell for Reckless Sleepers

Performed with 5 members of the company, lighting and sound operator.

The scenery can be transported in a LWB Van.

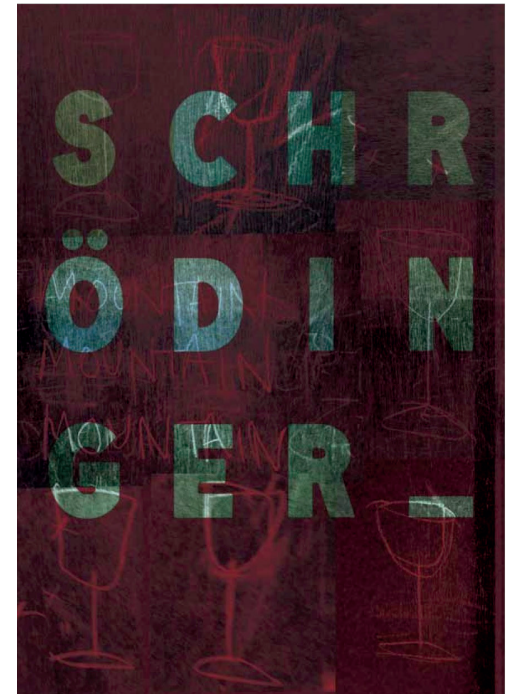
Suitable for Mid-Scale theatre spaces.

Running time 60 Minutes.

In 2022 a new full length video will be captured for Digital Theatre+ to be made available for distribution in 2023.

Synopsis: Schrödinger is about thought experiments, cats, René Magritte, love, time, mathematics, observations, truth lies and alcohol.

Review: That black box might well, in the final analysis, be a metaphor for the mind, but it is also a space for gripping physical theatre.' - The Guardian



Links

[Press reviews](#)

[Production file](#)

[Presentation hosts](#)

# It's Hot It's Not

Commissioned in 2016 research into the development of the project took place in Polverigi, London & Gent, it is the companies first creation for young people aged 3+

In 2019 following the construction of the simple plywood scenery the company devised, rehearsed for 4 weeks and presented the project for a sell out run of 60 performances at the Unicorn Theatre.

Created by: Mole Wetherell, Kevin Egan & Leen Dewilde for Reckless Sleepers

Presented with 3 members of the company & 1 sound/lighting operator

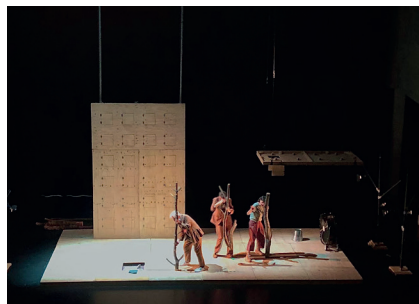
The scenery fits within a MWB Van

Running time: 45 minutes

Synopsis : This surreal, funny & carefully crafted physical performance explores the weather in all its forms & takes delight in discovering the world anew & how we experience it differently, wherever we are.

Review sample : 'It's not quite a dance show, although it is very physical. It's sort of visual comedy. But not quite slapstick [...] Whatever it was, it was enjoyably bonkers.' The Family Stage

A Unicorn theatre production in association with Reckless Sleepers



Links

[Press reviews](#)

[Production file](#)

[Presentation hosts](#)

# Binary Opposition

Initiated during lock-down Binary Opposition places the two constructions of Schrödinger & Negative Space together, developed simultaneously in Manchester & Gent research and development of the project continues post pandemic in 2023 & 2024 with a première scheduled for the beginning of 2024 in Manchester.

As well as the stand alone performance with 6 members of the company during 2023 the company will test up-scaling of the project with larger groups of younger performers who will work within the structure created for the project.

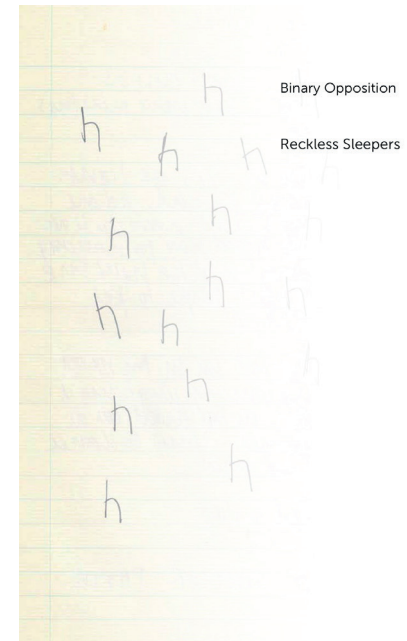
We envisage a stage occupied by 18 performers.

The main wooden structure is 8m wide 3.6m high & 4m deep it takes two people 4 hrs to construct the frame and when dismantles fits within a LWB van.

Project presented with 6 company members & 1 sound/lighting operator.

Project in production and development from July - December 2023 during residencies in Belgium, Portugal & The UK.

Project touring from March 2024



Links

[Production pack](#)

[Video footage of rehearsals](#)

# Break up - Break down

During lock-down in Gent two short films Break up & Break down were commissioned.

Research and development of the project continued post pandemic in Angers and continues in 2023 by the same group of dancers who present A String Section development phases can ideally take place prior to or following a presentation of this performance..

Created by: Leen Dewilde for Reckless Sleepers

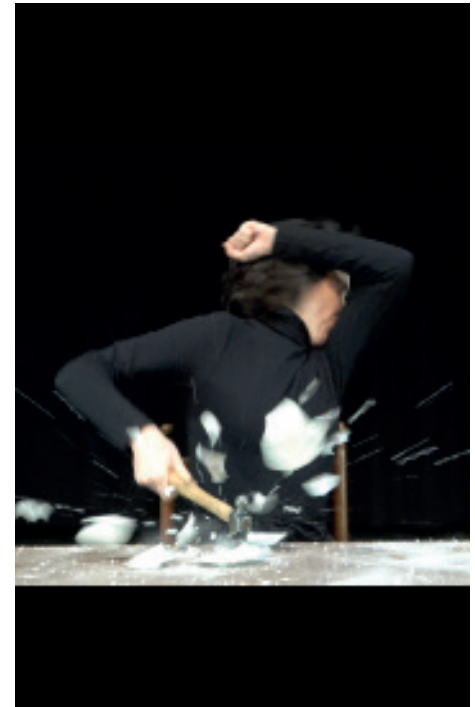
Performed with 5 members of the company, lighting and sound operator.

The performance uses 6 standard wooden tables and 6 stackable chairs if transported by rail, 6 plywood tops 740 x 740 x 18mm (painted black ) and chairs would need to be provided.

Suitable for Small-Scale theatre and galley spaces.

Running time 40 Minutes.

Synopsis: Break up - Break down follows a very simple set of instructions, each and every one of the cups and saucers that are placed on a table are destined for destruction. Cups are placed on the edges of tables, the actions of smashing are rehearsed, a hammer hovers tentatively close to a point of impact.



Links

[Video documentation](#)

[Project description](#)

# site work



with all we know Oostende 2019



GB Bill London Nottingham 2000



Creating the past Edinburgh 2001



# The residency

After an exhausting run of touring Schrödinger in 2011 Reckless Sleepers announced that "touring is dead long live the residency."

We wanted to improve the way that we could connect to and with the places that we visited promoting to our venue hosts the value of extending our visit.

In order to support and facilitate this required a change in what we created, who it was made with and the context of how this might be presented.

We embarked on a process of broadening the range of work that we produced outside of the theatre, with A String Section , inside the theatre creating our first performance for children, and professionally documenting our repertoire of projects so that they could be distributed digitally with our broadcast partners Digital Theatre+.

Our models of residency are as varied as the places that we visit and projects that we are asked to develop and present.

It has included the creation of new work with younger people, the development of new company projects, up-scaling of existing projects, or the presentation of multiple projects in the same location.

It led to creating other language versions of The Last Supper into French, Italian, Spanish & Catalan.

We've created new works and rebuilt scenery together with university students, provided workshops for school children, supported local artists, increased the number of company members. Increased the numbers of people visiting our presentations reduced our carbon footprint, supported venues with promotional activities and much much more.

# A d a p t a t i o n

Since its inception Reckless Sleepers have adapted its projects into site specific & durational performances, for interior spaces and outdoor sites.

Our first commission Shift was for a gallery site in Nottingham that was previously a Library; for this commission we saved & collected 2000 hardbacked books and reinstalled them in the gallery, a durational event using these books was presented for the South Bank Centre's Great outdoors Festival, we returned to the same festival a few years later with a project called GB Bill, an 8hr performance using recycled transit vinyl (the stuff that is used to advertise on busses).

In 2002 we created The Last Supper an intimate performance for 39 people, adapted into 7 different European languages and presented in many different sites and locations including churches, galleries & courtyards.

We have created one off events such as Sion a sound installation using different language commentaries from the European Football championships, Turing Test audience participatory exhibition for the Arnolfini Gallery in Bristol, and Creating the Past which was a large scale exhibition and month long performance event for the National Museum of Scotland.

For the past 10 years our focus on outdoor work has been dominated by A String Section, originally a performance for galleries, since its premiere this performance has been presented close to 100 times, the largest a series of 6 performances with 15 dancers for Metropolis Festival in Copenhagen.

Presently we are adapting our process of making. Starting in the summer of 2023 the company toured the creation of a new project called Binary Opposition made together with groups of children & young people before touring a "finished" version from March 2025.